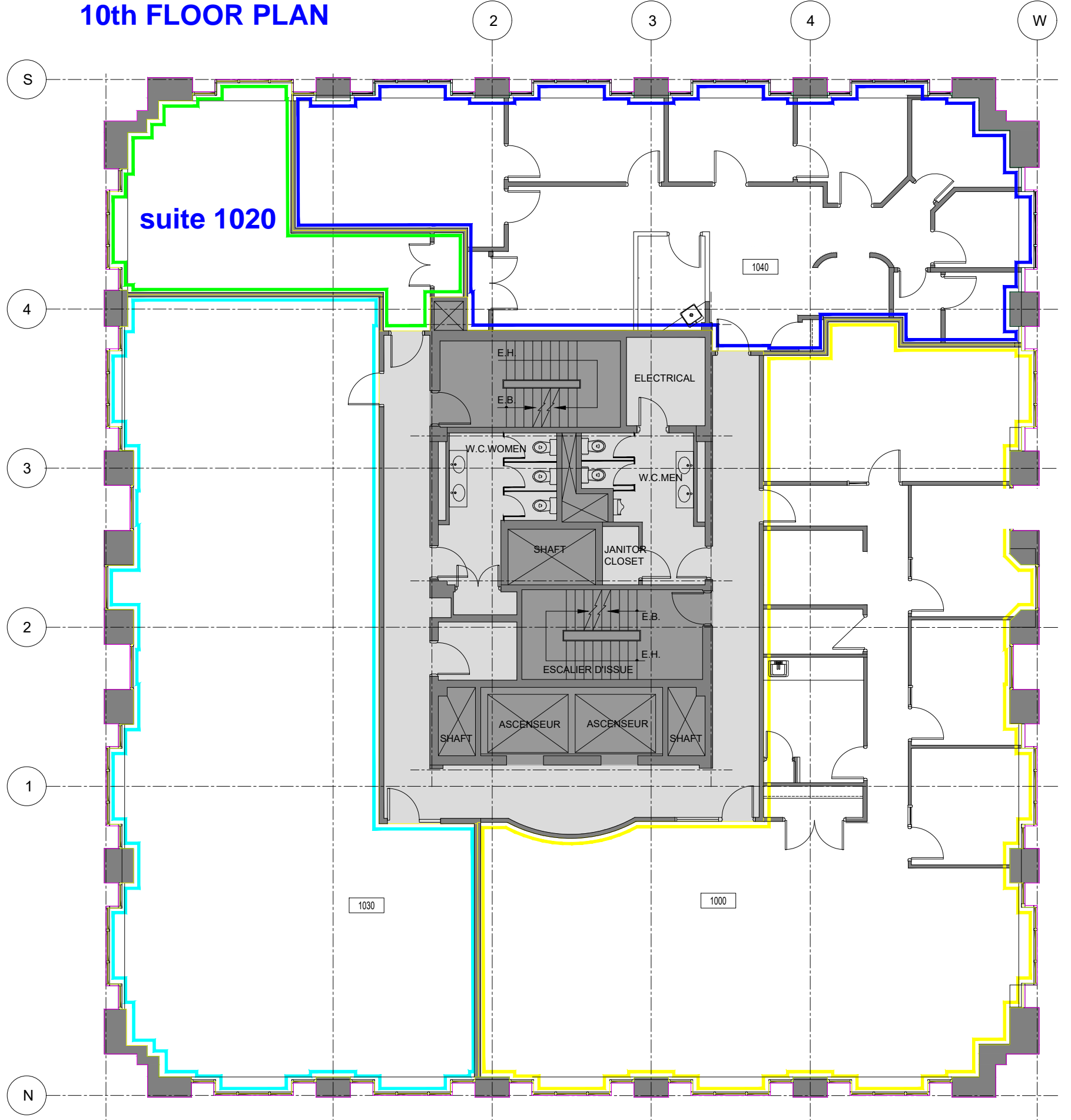


10th FLOOR PLAN





The diagram shows a floor plan for a suite. A large central area is labeled "suite 1020". Several utility lines are overlaid on the plan: a green line runs along the top and left walls, then down the right wall, and across the bottom; a blue line runs along the top wall, then down the right wall, and across the bottom; a cyan line runs along the bottom wall and up the right wall. There are several grey rectangular areas representing fixtures or equipment, including what appears to be a bathroom with a toilet and sink on the right side. The plan is bounded by dashed lines.

suite 1020